

23 Lord Jesus Christ, Be Present Now

HERR JESU CHRIST, DICH ZU UNS WEND

LM

E♭ Cm E♭ F B♭



1 Lord Je - sus Christ, be pre - sent now, And let
 2 Un - seal our lips to sing Thy praise, Our hearts
 3 Un - til we join the hosts that cry, "Ho - ly
 4 Glo - ry to God the Fa - ther, Son, And Ho -

E♭ B♭ E♭ B♭

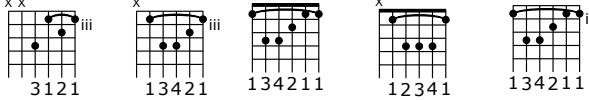


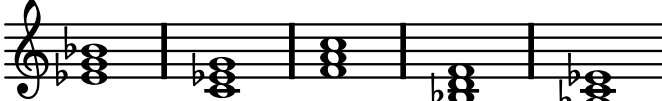
Thy Ho - ly Spir - it bow All hearts in love and
 in true de - vo - tion raise, Our faith in - crease, our
 art Thou, O Lord most high!" And 'mid the light of
 ly Spir - it, Three in One! To Thee, O bless - ed

E♭ F B♭ A♭ B♭ E♭ B♭ E♭



fear to - day To hear the truth and keep Thy way.
 minds en - light That we may know Thy name a - right
 that blest place Shall gaze up - on Thee face to face.
 Trin - i - ty, Be praise through - out e - ter - ni - ty!

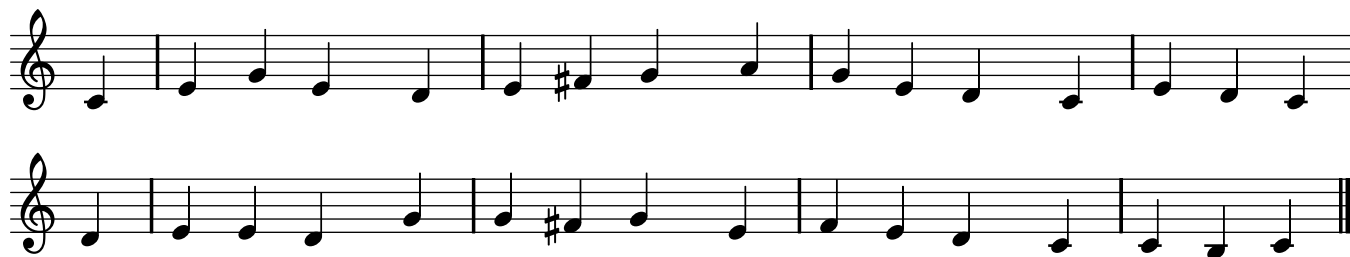
x x iii x iii x iv

 3 1 2 1 1 3 4 2 1 1 3 4 2 1 1 1 2 3 4 1 1 3 4 2 1 1



8vb
E♭ Cm F B♭ A♭

HERR JESU CHRIST, DICH ZU UNS WEND (C)

Transposed for E \flat Instruments



HERR JESU CHRIST, DICH ZU UNS WEND (F)

Transposed for B \flat Instruments



Hymn #23: Lord Jesus Christ, Be Present Now

Text: *Lutherische Hand-Büchlein*,

2nd ed., Altenburg, 1648

Public Domain

Evangelical Lutheran Hymnary

Tune: *Cantionale Germanicum*,

Gochsheim, Dresden, 1628

Public Domain