

# 26 The King Shall Come

CONSOLATION

CM

Fm Cm Fm B $\flat$  Cm Fm Cm



1 The King shall come when morn - ing dawns  
 2 Not as of old a lit - tle child,  
 3 Oh, bright - er than the ris - ing morn  
 4 Oh, bright - er than that glo - rious morn  
 5 The King shall come when morn - ing dawns

Fm Cm Fm B $\flat$  C Fm Cm D $\flat$

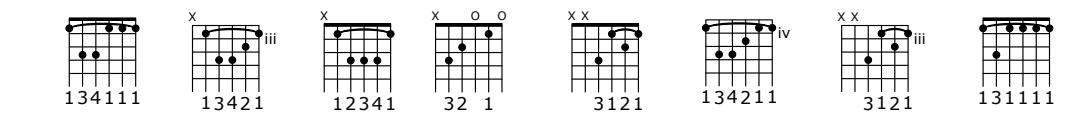


And light tri - um - phant breaks, When beau - ty gilds  
 To bear and fight and die, But crowned with glo -  
 When Christ, vic - to - rious, rose And left the lone -  
 Shall dawn up - on our race The day when Christ  
 And light and beau - ty brings. Hail, Christ the Lord!


A $\flat$  E $\flat$  Fm<sup>7</sup> Cm Fm Cm Fm E $\flat$  Fm



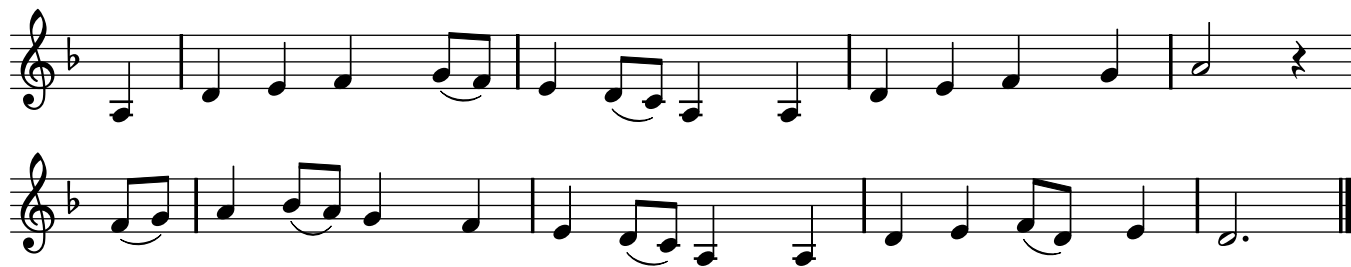
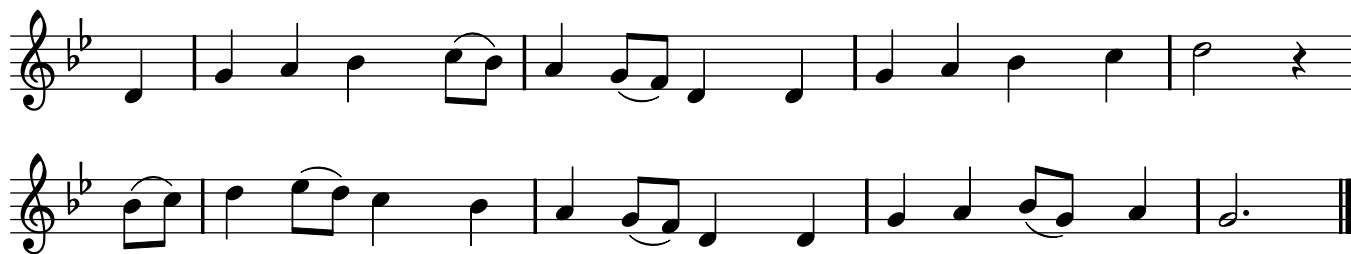
the east - ern hills And life to joy a - wakes.  
 ry like the sun That lights the morn - ing sky.  
 some place of death De - spite the rage of foes.  
 in splen - dor comes And we shall see his face.  
 Your peo - ple pray: Come quick - ly, King of kings.



134111 x 13421 x 12341 x 32 1 x x 3121 134211 iv x x 3121 131111



8vb-----  
 Fm Cm B $\flat$  C D $\flat$  A $\flat$  E $\flat$  Fm<sup>7</sup>

**CONSOLATION (F)**Transposed for E $\flat$  Instruments**CONSOLATION (B $\flat$ )**Transposed for B $\flat$  Instruments

Hymn #26: The King Shall Come  
Text: John Brownlie, 1859-1925  
Public Domain

*Lutheran Worship*  
Tune: John Wyeth,  
*Repository of Sacred Music, Part II,*  
Harrisburg, 1813  
Public Domain